

**Quality ID #39 (NQF 0046): Screening for Osteoporosis for Women Aged 65-85 Years of Age**  
– National Quality Strategy Domain: Effective Clinical Care  
– Meaningful Measure Area: Preventive Care

**2020 COLLECTION TYPE:**  
**MEDICARE PART B CLAIMS**

**MEASURE TYPE:**  
Process

**DESCRIPTION:**  
Percentage of female patients aged 65-85 years of age who ever had a central dual-energy X-ray absorptiometry (DXA) to check for osteoporosis

**INSTRUCTIONS:**  
This measure is to be submitted a minimum of **once per performance period** for patients seen during the performance period. Female patients aged 65-85 years of age should have a central DXA measurement performed at least once to screen for osteoporosis. This measure may be submitted by Merit-based Incentive Payment System (MIPS) eligible clinicians who perform the quality actions described in the measure based on the services provided and the measure-specific denominator coding.

**Measure Submission Type:**  
Measure data may be submitted by individual MIPS eligible clinicians using Medicare Part B claims. The listed denominator criteria are used to identify the intended patient population. The numerator quality-data codes included in this specification are used to submit the quality actions allowed by the measure on the claim form(s). All measure-specific coding should be submitted on the claim(s) representing the denominator eligible encounter and selected numerator option.

**DENOMINATOR:**  
Women age 65-85

**Denominator Criteria (Eligible Cases):**  
Female patients aged 65-85 years on date of encounter

**AND**

**Patient encounter during the performance period (CPT):** 99201, 99202, 99203, 99204, 99205, 99212, 99213, 99214, 99215

**AND NOT**

**Diagnosis of osteoporosis on date of encounter (ICD-10-CM):** M80.00XA, M80.00XD, M80.00XG, M80.00XK, M80.00XP, M80.00XS, M80.011A, M80.011D, M80.011G, M80.011K, M80.011P, M80.011S, M80.012A, M80.012D, M80.012G, M80.012K, M80.012P, M80.012S, M80.019A, M80.019D, M80.019G, M80.019K, M80.019P, M80.019S, M80.021A, M80.021D, M80.021G, M80.021K, M80.021P, M80.021S, M80.022A, M80.022D, M80.022G, M80.022K, M80.022P, M80.022S, M80.029A, M80.029D, M80.029G, M80.029K, M80.029P, M80.029S, M80.031A, M80.031D, M80.031G, M80.031K, M80.031P, M80.031S, M80.032A, M80.032D, M80.032G, M80.032K, M80.032P, M80.032S, M80.039A, M80.039D, M80.039G, M80.039K, M80.039P, M80.039S, M80.041A, M80.041D, M80.041G, M80.041K, M80.041P, M80.041S, M80.042A, M80.042D, M80.042G, M80.042K, M80.042P, M80.042S, M80.049A, M80.049D, M80.049G, M80.049K, M80.049P, M80.049S, M80.051A, M80.051D, M80.051G, M80.051K, M80.051P, M80.051S, M80.052A, M80.052D, M80.052G, M80.052K, M80.052P, M80.052S, M80.059A, M80.059D, M80.059G, M80.059K, M80.059P, M80.059S, M80.061A, M80.061D, M80.061G, M80.061K, M80.061P, M80.061S, M80.062A, M80.062D, M80.062G, M80.062K, M80.062P, M80.062S, M80.069A, M80.069D, M80.069G, M80.069K, M80.069P, M80.069S, M80.071A, M80.071D, M80.071G, M80.071K, M80.071P, M80.071S,

M80.072A, M80.072D, M80.072G, M80.072K, M80.072P, M80.072S, M80.079A, M80.079D, M80.079G, M80.079K, M80.079P, M80.079S, M80.08XA, M80.08XD, M80.08XG, M80.08XK, M80.08XP, M80.08XS, M80.80XA, M80.80XD, M80.80XG, M80.80XK, M80.80XP, M80.80XS, M80.811A, M80.811D, M80.811G, M80.811K, M80.811P, M80.811S, M80.812A, M80.812D, M80.812G, M80.812K, M80.812P, M80.812S, M80.819A, M80.819D, M80.819G, M80.819K, M80.819P, M80.819S, M80.821A, M80.821D, M80.821G, M80.821K, M80.821P, M80.821S, M80.822A, M80.822D, M80.822G, M80.822K, M80.822P, M80.822S, M80.829A, M80.829D, M80.829G, M80.829K, M80.829P, M80.829S, M80.831A, M80.831D, M80.831G, M80.831K, M80.831P, M80.831S, M80.832A, M80.832D, M80.832G, M80.832K, M80.832P, M80.832S, M80.839A, M80.839D, M80.839G, M80.839K, M80.839P, M80.839S, M80.841A, M80.841D, M80.841G, M80.841K, M80.841P, M80.841S, M80.842A, M80.842D, M80.842G, M80.842K, M80.842P, M80.842S, M80.849A, M80.849D, M80.849G, M80.849K, M80.849P, M80.849S, M80.851A, M80.851D, M80.851G, M80.851K, M80.851P, M80.851S, M80.852A, M80.852D, M80.852G, M80.852K, M80.852P, M80.852S, M80.859A, M80.859D, M80.859G, M80.859K, M80.859P, M80.859S, M80.861A, M80.861D, M80.861G, M80.861K, M80.861P, M80.861S, M80.862A, M80.862D, M80.862G, M80.862K, M80.862P, M80.862S, M80.869A, M80.869D, M80.869G, M80.869K, M80.869P, M80.869S, M80.871A, M80.871D, M80.871G, M80.871K, M80.871P, M80.871S, M80.872A, M80.872D, M80.872G, M80.872K, M80.872P, M80.872S, M80.879A, M80.879D, M80.879G, M80.879K, M80.879P, M80.879S, M80.88XA, M80.88XD, M80.88XG, M80.88XK, M80.88XP, M80.88XS, M81.0, M81.6, M81.8

#### **NUMERATOR:**

The number of women who have documentation in their medical record of having received a DXA test of the hip or spine

#### **Numerator Quality-Data Coding Options:**

**Patient receiving Hospice Services, Patient Not Eligible:**

**Denominator Exclusion: G9690:**

Patient receiving hospice services any time during the measurement period

**OR**

**Central DXA Measurement Performed**

**Performance Met: G8399:**

Patient with documented results of a central Dual-energy X-Ray Absorptiometry (DXA) ever being performed

**OR**

**Central DXA Measurement not Performed, Reason not Given**

**Performance Not Met: G8400:**

Patient with central Dual-energy X-Ray Absorptiometry (DXA) results not documented, reason not given

#### **RATIONALE:**

This measure assesses the number of women 65-85 who have ever received a dual-energy x-ray absorptiometry (DXA) test to check for osteoporosis. There is convincing evidence that bone mineral density tests predict short-term risk for osteoporotic fractures. There is also evidence osteoporosis treatment reduces the incidence of fracture in women who are identified to be at risk of an osteoporotic fracture. Fractures, especially in the older population, can cause significant health issues, decline in function, and, in some cases lead to mortality.

#### **CLINICAL RECOMMENDATION STATEMENTS:**

The U.S. Preventive Services Task Force (USPSTF) recommends screening for osteoporosis in women aged 65 years and older and in younger women whose fracture risk is equal to or greater than that of a 65-year old white woman who has no additional risk factors. (B Recommendation) (USPSTF). "Based on the U.S. FRAX tool, a 65-year-old white woman with no other risk factors has a 9.3% 10-year risk for any osteoporotic fracture. White women between the ages of 50 and 64 years with equivalent or greater 10-year fracture risks based on specific risk factors include but are not limited to the following persons: 1) a 50-year-old current smoker with a BMI less than 21 kg/m2,

daily alcohol use, and parental fracture history; 2) a 55-year-old woman with a parental fracture history; 3) a 60-year-old woman with a BMI less than 21 kg/m<sup>2</sup> and daily alcohol use; and 4) a 60-year-old current smoker with daily alcohol use. The FRAX tool also predicts 10-year fracture risks for black, Asian, and Hispanic women in the United States. In general, estimated fracture risks in nonwhite women are lower than those for white women of the same age.” (USPSTF)

Current diagnostic and treatment criteria for osteoporosis rely on DXA measurements only.

The USPSTF did not define a specific upper age limit for screening in women, however they noted that clinicians should take into account the patient's remaining lifespan when deciding whether to screen patients with significant illness; the benefit of treatment emerged 18 to 24 months after initiation of treatment.

**COPYRIGHT:**

Physician Performance Measures (Measures) and related data specifications have been developed by the PCPI® Foundation (PCPI®) and the National Committee for Quality Assurance (NCQA). These Measures are not a clinical guideline and does not establish a standard of medical care, and has not been tested for all potential applications. The Measures, while copyrighted, can be reproduced and distributed, without modification, for noncommercial purposes, eg, use by health care providers in connection with their practices. Commercial use is defined as the sale, license, or distribution of the Measures for commercial gain, or incorporation of the Measures into a product or service that is sold, licensed or distributed for commercial gain. Commercial uses of the Measures require a license agreement between the user and the PCPI® or NCQA. Neither the American Medical Association (AMA), nor the former AMA-convened Physician Consortium for Performance Improvement(R), PCPI, NCQA nor its members shall be responsible for any use of the Measure. © 2019 NCQA and PCPI® Foundation. All Rights Reserved.

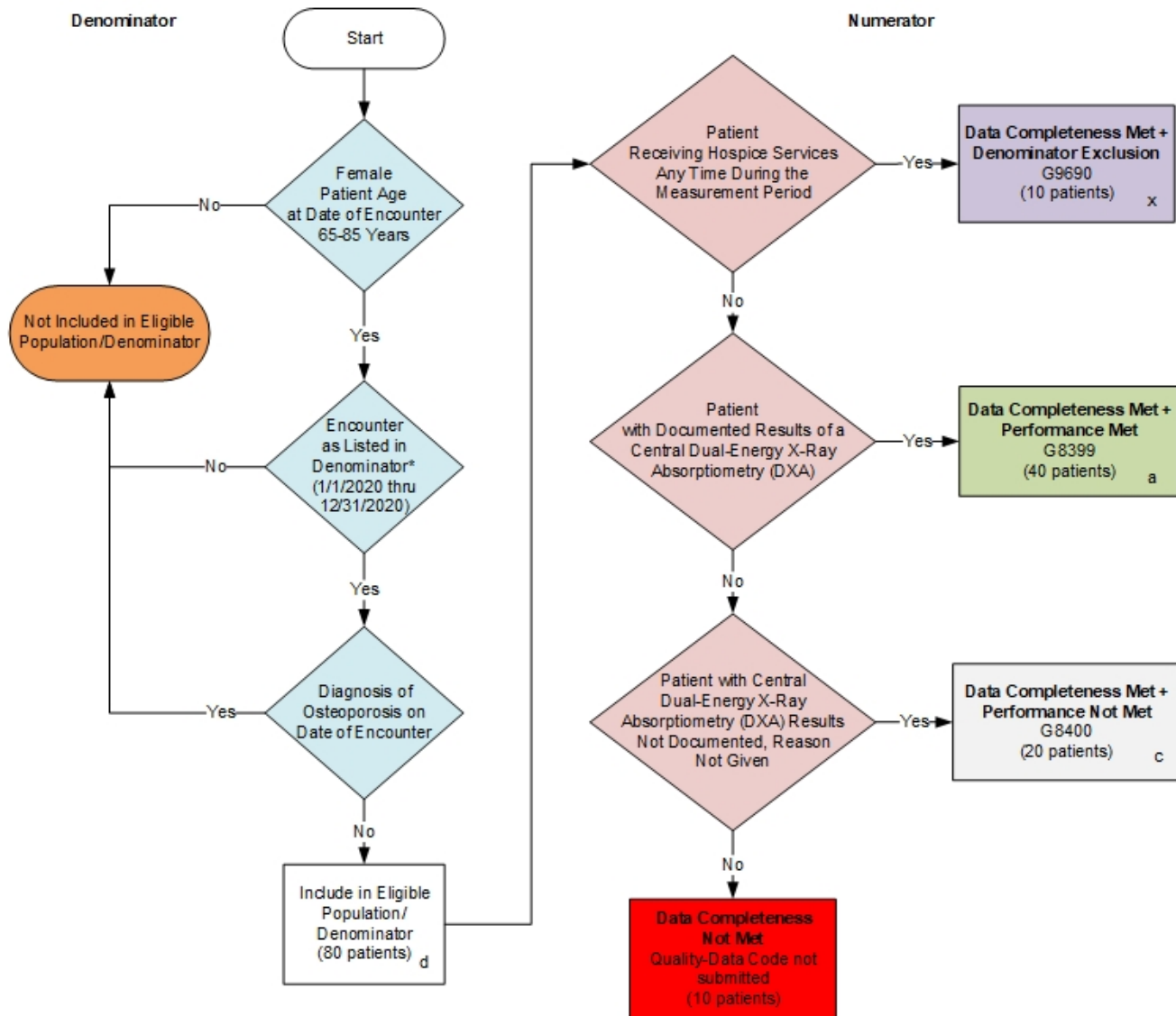
THE MEASURES AND SPECIFICATIONS ARE PROVIDED "AS IS" WITHOUT WARRANTY OF ANY KIND.

Limited proprietary coding is contained in the Measure specifications for user convenience. Users of proprietary code sets should obtain all necessary licenses from the owners of the code sets. NCQA disclaims all liability for use or accuracy of any CPT or other codes contained in the specifications.

CPT® contained in the Measure specifications is copyright 2004-2019 American Medical Association. LOINC® copyright 2004-2019 Regenstrief Institute, Inc. This material contains SNOMED Clinical Terms® (SNOMED CT®) copyright 2004-2019 International Health Terminology Standards Development Organisation. ICD-10 copyright 2019 World Health Organization. All Rights Reserved.

## 2020 Medicare Part B Claims Flow for Quality ID #39 NQF #0046: Screening for Osteoporosis for Women Aged 65-85 Years of Age

**Disclaimer:** Refer to measure specification for specific coding and instructions to submit this measure.



### SAMPLE CALCULATIONS:

**Data Completeness=**  

$$\frac{\text{Denominator Exclusion (x=10 patients)} + \text{Performance Met (a=40 patients)} + \text{Performance Not Met (c=20 patients)}}{\text{Eligible Population / Denominator (d=80 patients)}} = \frac{70 \text{ patients}}{80 \text{ patients}} = 87.50\%$$

**Performance Rate=**  

$$\frac{\text{Performance Met (a=40 patients)}}{\text{Data Completeness Numerator (70 patients) - Denominator Exclusion (x=10 patients)}} = \frac{40 \text{ patients}}{60 \text{ patients}} = 66.67\%$$

\*See the posted measure specification for specific coding and instructions to submit this measure.

NOTE: Submission Frequency: Patient-Process

CPT only copyright 2019 American Medical Association. All rights reserved.  
The measure diagrams were developed by CMS as a supplemental resource to be used in conjunction with the measure specifications. They should not be used alone or as a substitution for the measure specification.

v4

**2020 Medicare Part B Claims Flow Narrative for Quality ID#39 NQF #0046:  
Screening for Osteoporosis for Women Aged 65-85 Years of Age**

**Disclaimer:** Refer to the measure specification for specific coding and instructions to submit this measure

1. Start with Denominator
2. Check Female Patient Age:
  - a. If Female Patient Age is 65 through 85 Years on Date of Encounter equals No during the performance period, do not include in Eligible Population. Stop Processing.
  - b. If Female Patient Age is 65 through 85 Years on Date of Encounter equals Yes during the performance period, proceed to check Encounter Performed.
3. Check Encounter Performed:
  - a. If Encounter as Listed in the Denominator equals No, do not include in Eligible Population. Stop Processing.
  - b. If Encounter as Listed in the Denominator equals Yes, proceed to check Diagnosis.
4. Check Patient Diagnosis:
  - a. If Diagnosis of Osteoporosis as Listed in the Denominator equals No, include in Eligible Population.
  - b. If Diagnosis of Osteoporosis as Listed in the Denominator equals Yes, do not include in Eligible Population. Stop Processing
5. Denominator Population:
  - a. Denominator Population is all Eligible Patients in the Denominator. Denominator is represented as Denominator in the Sample Calculation listed at the end of this document. Letter d equals 80 patients in the Sample Calculation.
6. Start Numerator
7. Check Patient Receiving Hospice Services Any Time During the Measurement Period:
  - a. If Patient Receiving Hospice Services Any Time During the Measurement Period equals Yes, include in Data Completeness Met and Denominator Exclusion.
  - b. Data Completeness Met and Performance Met letter is represented in the Data Completeness and Performance Rate in the Sample Calculation listed at the end of this document. Letter x equals 10 patients in the Sample Calculation.
  - c. If Patient Receiving Hospice Services Any Time During the Measurement Period equals No, proceed to check Patient with Documented Results of a Central Dual-Energy X-Ray Absorptiometry (DXA)
8. Check Patient with Documented Results of a Central Dual-Energy X-Ray Absorptiometry (DXA):
  - a. If Patient with Documented Results of a Central Dual-Energy X-Ray Absorptiometry (DXA) equals Yes, include in Data Completeness Met and Performance Met.

- b. Data Completeness Met and Performance Met letter is represented in the Data Completeness and Performance Rate in the Sample Calculation listed at the end of this document. Letter a equals 40 patients in the Sample Calculation.
  - c. If Patient with Documented Results of a Central Dual-Energy X-Ray Absorptiometry (DXA) equals No, proceed to check Patient with Central Dual-Energy X-Ray Absorptiometry (DXA) Results Not Documented, Reason Not Given.
9. Check Patient with Central Dual-Energy X-Ray Absorptiometry (DXA) Results Not Documented, Reason Not Given:
  - a. If Patient with Central Dual-Energy X-Ray Absorptiometry (DXA) Results Not Documented, Reason Not Given equals Yes, include in Data Completeness Met and Performance Not Met.
  - b. Data Completeness Met and Performance Not Met letter is represented in the Data Completeness in the Sample Calculation listed at the end of this document. Letter c equals 20 patients in the Sample Calculation.
  - c. If Patient with Central Dual-Energy X-Ray Absorptiometry (DXA) Results Not Documented, Reason Not Given equals No, proceed to check Data Completeness Not Met.
10. Check Data Completeness Not Met:
  - a. If Data Completeness Not Met, the Quality Data Code was not submitted. 10 patients have been subtracted from the Data Completeness Numerator in the Sample Calculation.

**SAMPLE CALCULATIONS:**

**Data Completeness=**

Denominator Exclusion (x=10 patients)+ Performance Met (a=40 patients) + Performance Not Met (c=20 patients) = 70 patients = 87.50%  
 Eligible Population / Denominator (d=80 patients) = 80 patients

**Performance Rate=**

Performance Met (a=40 patients) = 40 patients = 66.67%  
 Data Completeness Numerator (70 patients) – Denominator Exclusion (x=10 patients) = 60 patients